

We The People Congress, Inc.

**Operations Plan
2006**

INDEX

Page

Mission Statement..... 1

Objectives..... 2

Strategy..... 2 - 5

Meeting Schedule..... 6

Portal Page Design 7

Organization Chart..... 8

Organization Description..... 9

2006 Budget 10 - 11

Appendix:

WTPC “Plan of Record” (POR)..... 12 - (end)

Includes overview/description and financial projections
by Region, State and Phase.

We The People Congress, Inc.

Mission Statement

The We the People Congress is a non-profit, membership-based assembly of patriotic Americans dedicated to “institutionalizing” citizen vigilance and governmental accountability. The organization is legally and institutionally separate from the We The People Foundation, but closely connected by a mutuality of purpose and coordinated operations plans.

The Mission of the We The People Congress is threefold:

- 1)** To institutionalize the local distribution of educational material that the People are not receiving from any other source – the history, meaning, effect and significance of every provision of our Declaration of Independence, the Constitution of the United States of America and our State Constitutions; and
- 2)** To institutionalize the independent review by the People of the actions of their local, state and federal government officials – *viz a viz* the requirements of their Constitutions; and
- 3)** To institutionalize resistance by the People against unconstitutional or illegal behavior by government officials whenever and wherever it is discovered.

The Congress coordinates closely with the WTP Foundation in carrying out its Mission. The Foundation takes the lead regarding the development of civic educational materials. The Foundation and the Congress share responsibility for identifying abuses of power. The Congress takes the lead in organizing for widespread grassroots civic activism to *correct* those abuses.

The WTP Congress has been established for the purpose of developing in the public forum, out of the ordinary, non-aligned citizenry, a constituency committed to a nationwide, pro-active, non-violent, mass-movement, with the goal of achieving ordered Liberty through citizen vigilance and governmental accountability. As an organized force of “constitutional activists,” the WTP Congress is organizing into “ward republics” in every county, with a “Citizen Vigilance Center” in every State Capital.

We recognize that popular sovereignty as a social and political force is a fundamental cornerstone of our constitutional Republic. The Congress is committed to achieving its goals of restoring Freedom and Constitutional Order through the exercise of popular sovereignty by all possible non-violent means including: public protest, judicial process, legislative lobbying, electoral advocacy and the exercise of the Right to Petition.

America stands at a crossroad. In our lifetime, we may witness either the demise or resurrection of our Constitution, our Republic and the promise of Liberty. The WTP Congress is uniquely committed to serve “We the People” in helping them organize to effectively repel the forces of tyranny.

General Objectives

Primary Objective: to develop a nation-wide network of informed and responsible citizens capable of educating Americans community-by-community, home-by-home, about the founding documents, Individual Rights, and the absolute necessity of holding government officials accountable to the Constitutions and Bill of Rights if we are to keep our Constitutional Republic.

Secondary Objective: to develop a nation-wide network of informed and responsible citizens capable of holding government accountable by compelling government officials – at all levels – to obey our federal and state constitutions.

2006 Objectives

- Acquire 50,000 new memberships in the WTPC Congress.
- Secure a level of \$50,000/month in subscription donations.
- Inspire 1,000+ WTP Congress supporters and members to participate in the Foundation's April "Hungering for Redress" event in Washington, DC.

Strategy

The WTP Congress will accomplish its mission of civic education and civic action through a five-part strategy.

Part I. -- Plan of Record (POR):

The POR is a radical redesign of the We The People Congress organizational structure and mode of operation centered around the application of personal financial incentives to secure significant operational funding for the organization while directly rewarding those responsible for the growth of the Congress and its long-term financial stability.

The plan (copy attached) calls for a new organizational layer of seven "regional" coordinators that will report directly to the recently created post of National Director. The POR also details an enhanced management structure including a number of full-time professional staff support positions and performance metrics for individual accountability to insure the Congress achieves its goals.

The POR will be deployed in January, enabling every coordinator in the WTPC network to share directly in a portion of the financial proceeds they generate for the organization through the generation of memberships, donations and Congress product sales. These proceeds will be distributed according to a computerized allocation model.

The distributed funds will provide direct funding for the Congress' local programs and projects (e.g., meetings, equipment, travel, etc.) and serve as a source of financial assistance for those that have, to this point, forgone service to the Congress due to personal budget constraints. This bold funding model will also provide remuneration for 100% of the labor of the full-time professional staff at the WTP Congress' Headquarters in D.C. and 40% of the labor of the full-time professional staff at the WTP Foundation's Headquarters in D.C.

All financial transactions (e.g., memberships, donations, purchases, etc.) will be coded and tracked, via our new computerized system for accountability, planning and reporting purposes.

The POR includes a tactical effort to interest young people on college campuses to join the WTP Congress. For this, the Congress will earmark the full time of a staff person.

The POR calls for the payments due Coordinators to be made in either Federal Reserve Notes or in "Liberty Dollars", a silver-backed depository-based currency.

Finally, the POR includes an examination of potential Congress members and Coordinators, covering basic WTP educational materials, to insure familiarity with (and commitment to) the essential principles of our founding documents and with the WTP Congress itself. Coordinators will be required to disclose certain personal information regarding their background and experience to show their qualifications and practical ability to function as a WTP Congress coordinator.

Part II: Restructure Board of Directors

Approximately two years ago, the Board of Directors for both the WTP Foundation and the WTP Congress began the process of restructuring with the intent to better serve the emerging national identities and missions of the organizations. Key to this process is the creation of an "advisory board" and the recruitment of Directors representing and articulating a national mission.

In 2006, the process will be completed with the appointment of several additional WTP Congress Directors, both primary and advisory, comprising a unique mix of talent, achievement and commitment to the restoration of Constitutional Order.

Part III: WTP HQ Relocation With Full-Time Professional Staff

Emerging events and circumstances fostered by a geometrically growing and complex national mission have resulted in a decision to permanently relocate the home offices of the WTP organizations in early 2006. The preferred new location is Washington, DC.

Although the organization has thrived to date in its original New York state location, relying significantly upon volunteer, discounted cost, and part-time contracted labor services, the pressing needs of our national mission and strategy clearly require a significant step-change in both our location and staffing.

A DC-centric office will provide the WTP Congress with access to government officials and news outlets and be conducive to building significant working relationships with the many freedom organizations and like-minded advocacy groups based in the Capital area.

The massive work load associated with the Congress' mission is now well beyond a level that can be accomplished by the current limited, but dedicated resources. If the organization is to succeed in its mission, it must have adequate funding to support and equip a reasonably sized, full-time staff of talented professionals, committed to the cause of Freedom and able to carry out the strategy of the Congress and achieve its noble objectives.

The anticipated staffing for the Congress includes positions for seven Regional Coordinators, a National Director, a Colligate Manager, as well as professional positions for communications and research, information technology, finance and fundraising and administrative support.

Crucial to this high-cost initiative is communicating the importance of this significant step-change to the People and securing their financial support. It's time to put WTP on the map as the leader in the fight to restore the Constitution and its essential Principles.

Part IV: Improved Communications & Technology

The Congress' strategy includes a number of technology related tactics aimed at improving its ability to effectively communicate with, and organize, We the People.

Revamped WTP Website – The emerging role of the WTP Congress requires that the Congress evolve a separate and identifiable website presence. Until presently, the web functions of the Congress (e.g., Congress coordinator controlled web pages, Congress memberships, etc.) have been intertwined within the primarily Foundation oriented website. The new WTP website design strategy relies on a “portal” page to guide visitors to either the Congress or Foundation websites and their respective functions. A draft of the portal page is attached.

Congress Blog -- “Blogging” is a new and powerful mode of harnessing the power of the Internet to communicate with large numbers of people. WTP intends to integrate a “blogging” strategy into its technology capabilities to augment and complement its main website, e-mail and web video streaming functions. It is expected that “blogs” will be posted at least several times a week and may include multi-media items such as audio files, graphics and links cross-referencing back to other WTP web resources.

Virtual Video Conferencing – Technology costs have fallen dramatically making live, video conferencing via the Internet feasible for use by the Congress. We intend to employ this technology both for internal organizational use and for interacting with other organizations.

Congress E-mail System Deployment – an e-mail system enabling every Congress coordinator to e-mail his/her local constituency has been completed and will be deployed as part of the POR in January.

Congress Status Reporting & Management System – in 2006, the Congress will deploy an integrated, computer based system for reporting, compiling and analyzing the activities of the Congress network of Coordinators. The first components of this system will involve the tracking and online reporting of detailed financial transactions (i.e., Congress memberships, donations and store purchases) in order to support the “POR” income distribution model (discussed previously). The second phase of systems development will facilitate integrated, hierarchical status and progress/problem reporting up through the Congress Coordinator network regarding ongoing activist tasks and projects (e.g., regional meetings, public events, etc.)

Part V: Congress Projects & WTPF Support

Party Intervention Modeling -- WTP Congress may undertake its first foray into the sphere of electoral politics by becoming involved in the 2006 elections in New York State. WTPC may commit its support to help a number of political organizations in NY achieve political reform through the assistance of its organizational, financial and technology resources and experience.

The intent is to develop and hone the political model used in the 2006 elections and then deploy the model in subsequent national elections as a means to secure a potent voice and independent “third interest” minority voting block, in order to influence and divert the national political and legislative agendas in favor of the goals of the WTP Congress and those organizations that desire

limited and proper governance, constrained by written Constitutions.

WTP RTP Lawsuit Support – WTP Congress will closely coordinate and support by various means, including financial, the WTP Foundation Right to Petition lawsuit.

GML 2006 Conference – WTP Congress will closely coordinate and support by various means, including financial, the WTP Foundation's GML 2006 Conference in D.C. in April.

WTP RTP Hunger Strike Event – WTP Congress will closely coordinate with, and support by various means, including financial, the WTP Foundation Hunger Strike event.

WTP Program Support for WTP Foundation – WTP Congress will closely coordinate with, and support by various means, including financial, the general agenda and objectives of the WTP Foundation. It is expected that the Congress organization will eventually become a significant source of operational funding for the Foundation's research and educational activities.

(12/20/05 Tentative)

We The People Event Schedule

(Note: details to be released later)

JANUARY

Saturday January 28: Tucson, Arizona

FEBRUARY

Saturday February 4: Colorado Springs, Colorado

Saturday February 11: Austin, Texas

Saturday February 18: Florida

Saturday February 25: California

MARCH

Saturday March 4: North Carolina

Sunday March 5: South Carolina

Saturday March 11: Washington state

Sunday March 12: Oregon

Saturday March 18: Illinois

Saturday March 25: New Hampshire

Sunday March 26: Vermont

APRIL

Saturday April 1: New York

Sunday April 2: New Jersey

Saturday April 8: Virginia

Friday, April 21 through Sunday, April 23

"Give Me Liberty 2006" (GML2006) conference

Washington, DC

Monday, April 24 through Sunday, May 7

"Hungering for Redress" mass-protest event

Washington, DC.

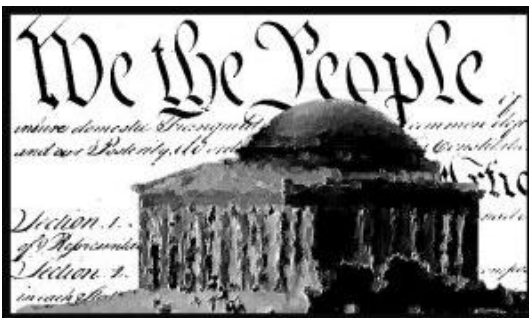
(WTP Portal Page, Draft Design)

**See Separate Attachment
For Full Design**

Portal Page URL = www.GiveMeLiberty.org

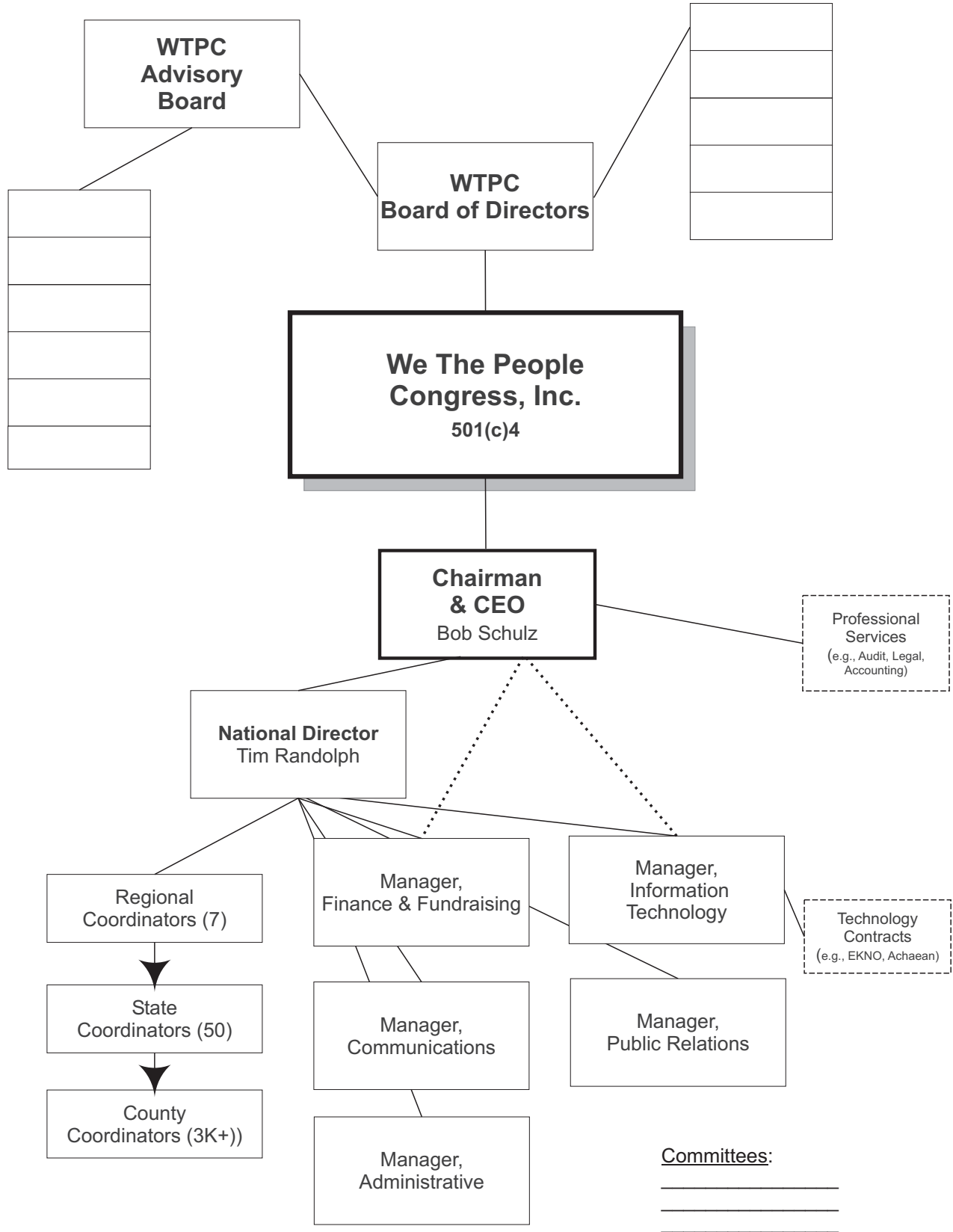


www.WeThePeopleFoundation.org



www.WeThePeopleCongress.org

We The People Congress Organization



WTP Congress Organization Description

Board of Directors: Five member board- Creates policy, oversees organization

Advisory Board: Six member board- non-voting, provides special skill sets and subject matter expertise, meets quarterly, provides important feedback

Chairman/CEO: Manages and coordinates resources, chairs board meetings, recommends policy, oversees staff and executes plans/policies

Committees: Composed of Board Members. Includes Executive, Finance, Fundraising, and Program committees.

National Director: Lead Congress Coordinator with full responsibilities for day-to-day management of the national WTP Congress Coordinator network and execution of WTPC plans.

Manager, Finance and Fundraising: Supports Treasurer, responsible for fund raising/financing initiatives, financial documentation and accounting records, asset management, fiscal year planning and works with accountants and auditors.

Manager, Communications: Responsible for in-house "Blogging", distribution of internal and external communications, advertising, mailing lists, e-mail broadcasts, and acts as contact point for Public Relations, Liberty Hour and website articles.

Manager, Administrative: Responsible for office management, travel reservations, order fulfillment, educational product stocking, document management, phone, mail, etc.

Manager, Information Technology: Web site maintenance, web-design, server management, web streaming, technical project support, LAN, IT equipment/ software mgmt., Technical contract management, Liberty Hour production, etc.

Manager, Public/College Relations : Responsible for public information and education about WTP, builds relationships with foundations, Universities, colleges and other NGOs, fosters WTP image, manages media contact, etc.

Manager, Projects and Programs Responsible for successful completion of Congress projects and programs including the distribution of educational materials, civic action events, membership performance metrics, etc.

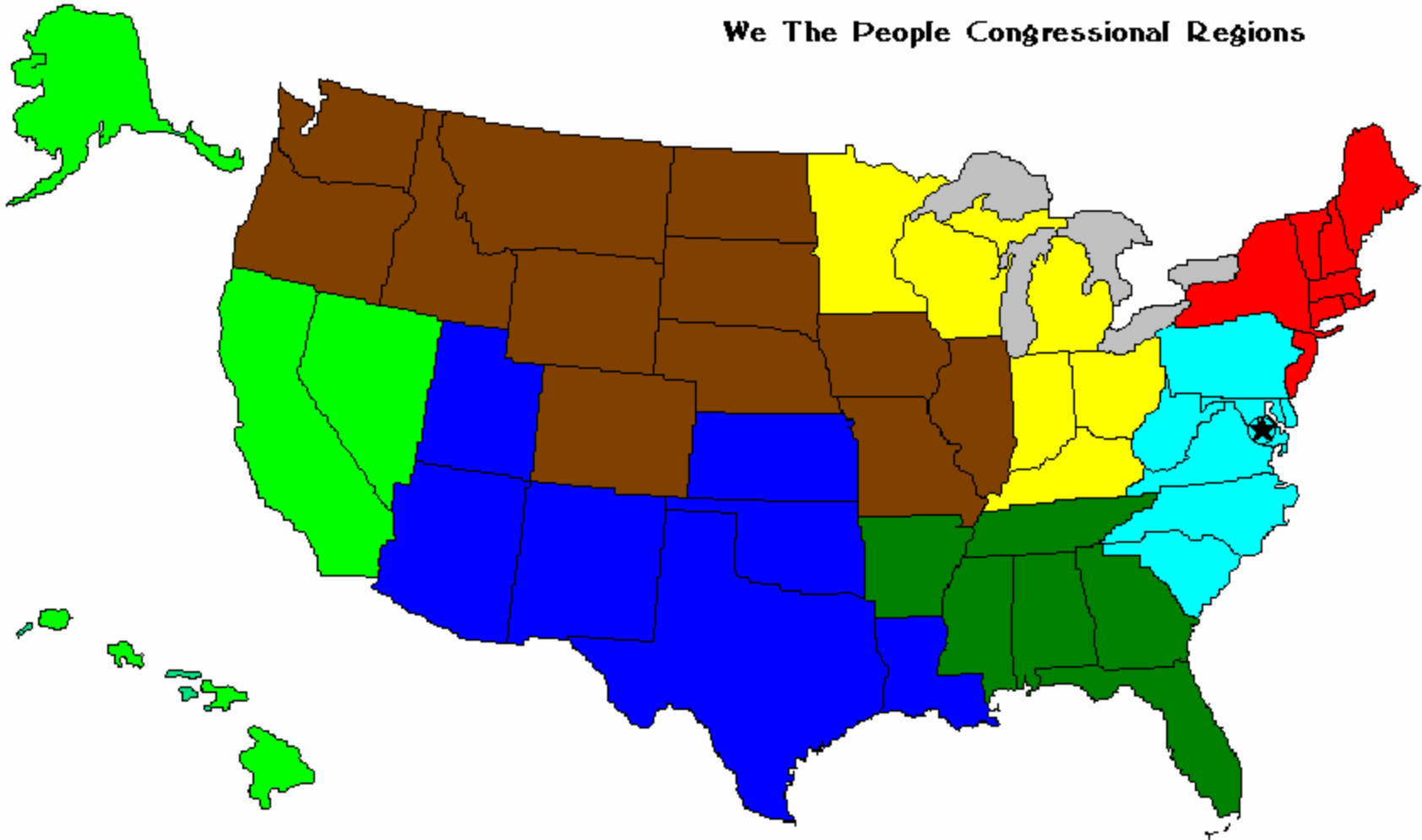
Professional Services: Contracted legal, accounting, independent auditing, technology support services, etc.

**We The People Congress
2006 Operating Budget**

Draft 12-26-05

FACILITIES	2006	Monthly Est. \$	Notes
Startup:			
Deposits (Rent, etc.)	\$ -		These Facility WTPC costs are minimal until WTPC employs a full-time support staff During Later POR Phases.
Insurance	\$ -		
IT/LAN Equipment/Setup	\$ -		
Gen Office Equipment	\$ -		What costs are incurred are reimbursed to WTPF via lump expense item (see below)
Furnishings (Desk/Chair/Cubes,misc)	\$ -		
Supplies	\$ -		
Moving, (Office only)	\$ -		
Security Sys, (Install)	\$ -		
Facility Upgrades	\$ -		
Startup Sub Tot	\$ -		
Recurring:			
Rent	\$ -	2000	
Electric/Gas	\$ -	225	
Cable TV/Internet	\$ -	400	
Security	\$ -	50	
Telephone	\$ -	300	
Misc (copier, cleaning, refuse, etc.)	\$ -	400	
Recurring Sub Tot	\$ -		
TOTAL	\$ -	3375	
PERSONNEL			NO WTPC-Owned Suppt Staff Until Late Phases
Chairman, CEO	\$ -	0	Salaries Based on DC, Professional Levels
Manager, Admin	\$ -	3700	Full yr.
National Director	\$ -	6500	Full Yr.
Manager, Info Tech	\$ -	6500	Full yr.
Manager, Communications	\$ -	6000	1/2 Year
Manager, Finance	\$ -	6000	1/4 Year
WTPC Coordinator Remuneration	\$ 188,000.00	0	(Primarily Regional & State in early Phases)
Relocation (non-recurring)	\$ -	0	
Travel	\$ -	0	
TOTAL	\$ 188,000.00	28700	

We The People Congressional Regions



Note: Alaska and Hawaii are not shown in position and are not drawn to scale.

CONFIDENTIAL

U.S. population 285,000,000
 Average population per region 40,714,286

				Phase 1	Phase 2	Phase 3	Phase 4	Phase 5	Phase 6	Phase 7	Phase 8
Voters 2004		122,167,408		\$30,000.00	\$60,000.00	\$120,000.00	\$200,000.00	\$300,000.00	\$420,000.00	\$560,000.00	\$720,000.00
				Monthly	Monthly	Monthly	Monthly	Monthly	Monthly	Monthly	Monthly
				Donation	Donation	Donation	Donation	Donation	Donation	Donation	Donation
State	Population	% of reg. population	Donation goals	Donation goals	Donation goals	Donation goals	Donation goals	Donation goals	Donation goals	Donation goals	Donation goals
North-East Region											
		599,038									
ME	1,274,923	0.0309	\$134.20	\$268.40	\$536.81	\$894.68	\$1,342.02	\$1,878.83	\$2,505.11	\$3,220.86	
NH	1,235,786	0.0299	\$130.08	\$260.17	\$520.33	\$867.22	\$1,300.83	\$1,821.16	\$2,428.21	\$3,121.99	
VT	608,827	0.0147	\$64.09	\$128.17	\$256.35	\$427.25	\$640.87	\$897.22	\$1,196.29	\$1,538.09	
MA	6,349,097	0.1537	\$668.33	\$1,336.65	\$2,673.30	\$4,455.51	\$6,683.26	\$9,356.56	\$12,475.42	\$16,039.82	
NY	18,976,457	0.4593	\$1,997.52	\$3,995.04	\$7,990.09	\$13,316.81	\$19,975.22	\$27,965.31	\$37,287.07	\$47,940.52	
NJ	8,414,350	0.2037	\$885.72	\$1,771.44	\$3,542.88	\$5,904.81	\$8,857.21	\$12,400.09	\$16,533.46	\$21,257.31	
RI	1,048,319	0.0254	\$110.35	\$220.70	\$441.40	\$735.66	\$1,103.49	\$1,544.89	\$2,059.85	\$2,648.38	
CT	3,405,565	0.0824	\$358.48	\$716.96	\$1,433.92	\$2,389.87	\$3,584.81	\$5,018.73	\$6,691.64	\$8,603.53	
Totals	8	41,313,324	0.1450	\$4,348.77	\$8,697.54	\$17,395.08	\$28,991.81	\$43,487.71	\$60,882.79	\$81,177.06	\$104,370.50
East Coast Region											
		(832,903)									
PA	12,281,054	0.308	\$1,292.74	\$2,585.49	\$5,170.97	\$8,618.28	\$12,927.43	\$18,098.40	\$24,131.19	\$31,025.82	
DE	783,600	0.020	\$82.48	\$164.97	\$329.94	\$549.89	\$824.84	\$1,154.78	\$1,539.71	\$1,979.62	
MD	5,296,486	0.133	\$557.52	\$1,115.05	\$2,230.10	\$3,716.83	\$5,575.25	\$7,805.35	\$10,407.13	\$13,380.60	
DC	572,059	0.014	\$60.22	\$120.43	\$240.87	\$401.44	\$602.17	\$843.03	\$1,124.05	\$1,445.20	
WV	1,808,344	0.045	\$190.35	\$380.70	\$761.41	\$1,269.01	\$1,903.52	\$2,664.93	\$3,553.24	\$4,568.45	
VA	7,078,515	0.177	\$745.11	\$1,490.21	\$2,980.43	\$4,967.38	\$7,451.07	\$10,431.50	\$13,908.66	\$17,882.56	
NC	8,049,313	0.202	\$847.30	\$1,694.59	\$3,389.18	\$5,648.64	\$8,472.96	\$11,862.15	\$15,816.19	\$20,335.11	
SC	4,012,012	0.101	\$422.32	\$844.63	\$1,689.27	\$2,815.45	\$4,223.17	\$5,912.44	\$7,883.25	\$10,135.61	
Totals	8	39,881,383	0.140	\$4,198.04	\$8,396.08	\$16,792.16	\$27,986.94	\$41,980.40	\$58,772.56	\$78,363.42	\$100,752.97
South-East Region											
		(891,014)									
FL	15,982,378	0.401	\$1,682.36	\$3,364.71	\$6,729.42	\$11,215.70	\$16,823.56	\$23,552.98	\$31,403.97	\$40,376.53	
GA	8,186,453	0.206	\$861.73	\$1,723.46	\$3,446.93	\$5,744.88	\$8,617.32	\$12,064.25	\$16,085.66	\$20,681.57	
AL	4,447,100	0.112	\$468.12	\$936.23	\$1,872.46	\$3,120.77	\$4,681.16	\$6,553.62	\$8,738.16	\$11,234.78	
MS	2,844,658	0.071	\$299.44	\$598.88	\$1,197.75	\$1,996.25	\$2,994.38	\$4,192.13	\$5,589.50	\$7,186.50	
TN	5,689,283	0.143	\$598.87	\$1,197.74	\$2,395.49	\$3,992.48	\$5,988.72	\$8,384.21	\$11,178.94	\$14,372.93	
AR	2,673,400	0.067	\$281.41	\$562.82	\$1,125.64	\$1,876.07	\$2,814.11	\$3,939.75	\$5,253.00	\$6,753.85	
Totals	6	39,823,272	0.140	\$4,191.92	\$8,383.85	\$16,767.69	\$27,946.16	\$41,919.23	\$58,686.93	\$78,249.24	\$100,606.16
North-Central Region											
		982,706									
KY	4,041,769	0.097	\$425.45	\$850.90	\$1,701.80	\$2,836.33	\$4,254.49	\$5,956.29	\$7,941.72	\$10,210.78	
OH	11,353,140	0.272	\$1,195.07	\$2,390.13	\$4,780.27	\$7,967.12	\$11,950.67	\$16,730.94	\$22,307.92	\$28,681.62	
IN	6,080,485	0.146	\$640.05	\$1,280.10	\$2,560.20	\$4,267.01	\$6,400.51	\$8,960.71	\$11,947.62	\$15,361.23	
MI	9,938,444	0.238	\$1,046.15	\$2,092.30	\$4,184.61	\$6,974.35	\$10,461.52	\$14,646.13	\$19,528.17	\$25,107.65	
WI	5,363,675	0.129	\$564.60	\$1,129.19	\$2,258.39	\$3,763.98	\$5,645.97	\$7,904.36	\$10,539.15	\$13,550.34	
MN	4,919,479	0.118	\$517.84	\$1,035.68	\$2,071.36	\$3,452.27	\$5,178.40	\$7,249.76	\$9,666.34	\$12,428.16	
Totals	6	41,696,992	0.146	\$4,389.16	\$8,778.31	\$17,556.63	\$29,261.05	\$43,891.57	\$61,448.20	\$81,930.93	\$105,339.77

0 CONFIDENTIAL

U.S. population 285,000,000
 Average population per region 40,714,286

Phase 1	Phase 2	Phase 3	Phase 4	Phase 5	Phase 6	Phase 7	Phase 8
\$ 30,000.00	\$ 60,000.00	\$ 120,000.00	\$ 200,000.00	\$ 300,000.00	\$ 420,000.00	\$ 560,000.00	\$ 720,000.00

State	Population	% of reg. population	Donation goals	Donation goals	Donation goals	Donation goals	Donation goals	Donation goals	Donation goals	Donation goals	
North-West-Central Region											
	(358,440)										
IL	12,419,293	0.308	\$1,307.29	\$2,614.59	\$5,229.18	\$8,715.29	\$13,072.94	\$18,302.12	\$24,402.82	\$31,375.06	
CO	4,301,261	0.107	\$452.76	\$905.53	\$1,811.06	\$3,018.43	\$4,527.64	\$6,338.70	\$8,451.60	\$10,866.34	
MO	5,595,211	0.139	\$588.97	\$1,177.94	\$2,355.88	\$3,926.46	\$5,889.70	\$8,245.57	\$10,994.10	\$14,135.27	
IA	2,926,324	0.073	\$308.03	\$616.07	\$1,232.14	\$2,053.56	\$3,080.34	\$4,312.48	\$5,749.97	\$7,392.82	
SD	754,844	0.019	\$79.46	\$158.91	\$317.83	\$529.72	\$794.57	\$1,112.40	\$1,483.20	\$1,906.97	
ND	642,200	0.016	\$67.60	\$135.20	\$270.40	\$450.67	\$676.00	\$946.40	\$1,261.87	\$1,622.40	
WY	493,782	0.012	\$51.98	\$103.95	\$207.91	\$346.51	\$519.77	\$727.68	\$970.24	\$1,247.45	
MT	902,195	0.022	\$94.97	\$189.94	\$379.87	\$633.12	\$949.68	\$1,329.55	\$1,772.73	\$2,279.23	
NE	1,711,263	0.042	\$180.13	\$360.27	\$720.53	\$1,200.89	\$1,801.33	\$2,521.86	\$3,362.48	\$4,323.19	
ID	1,293,953	0.032	\$136.21	\$272.41	\$544.82	\$908.04	\$1,362.06	\$1,906.88	\$2,542.50	\$3,268.93	
OR	3,421,399	0.085	\$360.15	\$720.29	\$1,440.59	\$2,400.98	\$3,601.47	\$5,042.06	\$6,722.75	\$8,643.53	
WA	5,894,121	0.142	\$620.43	\$1,240.87	\$2,481.74	\$4,136.23	\$6,204.34	\$8,686.07	\$11,581.43	\$14,890.41	
Totals	12	40,355,846	0.142	\$4,247.98	\$8,495.97	\$16,991.94	\$28,319.89	\$42,479.84	\$59,471.77	\$79,295.70	\$101,951.61
South-Central Region											
	(71,571)										
LA	4,468,976	0.110	\$470.42	\$940.84	\$1,881.67	\$3,136.12	\$4,704.19	\$6,585.86	\$8,781.15	\$11,290.04	
TX	20,851,820	0.513	\$2,194.93	\$4,389.86	\$8,779.71	\$14,632.86	\$21,949.28	\$30,729.00	\$40,972.00	\$52,678.28	
OK	3,450,654	0.085	\$363.23	\$726.45	\$1,452.91	\$2,421.51	\$3,632.27	\$5,085.17	\$6,780.23	\$8,717.44	
NM	1,819,046	0.045	\$191.48	\$382.96	\$765.91	\$1,276.52	\$1,914.79	\$2,680.70	\$3,574.27	\$4,595.48	
AZ	5,130,632	0.126	\$540.07	\$1,080.13	\$2,160.27	\$3,600.44	\$5,400.67	\$7,560.93	\$10,081.24	\$12,961.60	
KS	2,688,418	0.066	\$282.99	\$565.98	\$1,131.97	\$1,886.61	\$2,829.91	\$3,961.88	\$5,282.51	\$6,791.79	
UT	2,233,169	0.055	\$235.07	\$470.14	\$940.28	\$1,567.14	\$2,350.70	\$3,290.99	\$4,387.98	\$5,641.69	
Totals	7	40,642,715	0.143	\$4,278.18	\$8,556.36	\$17,112.72	\$28,521.20	\$42,781.81	\$59,894.53	\$79,859.37	\$102,676.33
West-Coast Region											
	(3,005,912)										
CA	33,871,648	0.898	\$3,565.44	\$7,130.87	\$14,261.75	\$23,769.58	\$35,654.37	\$49,916.11	\$66,554.82	\$85,570.48	
AK	626,932	0.017	\$65.99	\$131.99	\$263.97	\$439.95	\$659.93	\$923.90	\$1,231.87	\$1,583.83	
HI	1,211,537	0.032	\$127.53	\$255.06	\$510.12	\$850.20	\$1,275.30	\$1,785.42	\$2,380.56	\$3,060.73	
NV	1,998,257	0.053	\$210.34	\$420.69	\$841.37	\$1,402.29	\$2,103.43	\$2,944.80	\$3,926.40	\$5,048.23	
Totals	4	37,708,374	0.132	\$3,969.30	\$7,938.61	\$15,877.21	\$26,462.02	\$39,693.03	\$55,570.24	\$74,093.65	\$95,263.26

0		CONFIDENTIAL								
			PHASE 3 - Budget							
			Regions may advance through their Phases independent of each other.							
		Donation	County	Foundation	Congress	* S/R/E	State	** Region	Executive	
								7	4	
% of distribution				0.280	0.100	0.620	0.700	0.30	-	
Total per year		\$ 1,421,921.21	\$ -	\$ 398,137.94	\$ 142,192.12	\$ 881,591.15				
Total per month	51	\$ 118,493.43	\$ -	\$ 33,178.16	\$ 11,849.34	\$ 73,465.93	\$ 51,426.15	\$ 22,039.78	\$ -	
North-East	8	\$ 17,395.08	\$ -	\$ 4,870.62	\$ 1,739.51	\$ 10,784.95	\$ 8,066.85	\$ 3,148.54		
East Coast	8	\$ 16,792.16	\$ -	\$ 4,701.81	\$ 1,679.22	\$ 10,411.14	\$ 8,066.85	\$ 3,148.54		
South-East	6	\$ 16,767.69	\$ -	\$ 4,694.95	\$ 1,676.77	\$ 10,395.97	\$ 6,050.14	\$ 3,148.54		
North-Central	6	\$ 17,556.63	\$ -	\$ 4,915.86	\$ 1,755.66	\$ 10,885.11	\$ 6,050.14	\$ 3,148.54		
North-West	12	\$ 16,991.94	\$ -	\$ 4,757.74	\$ 1,699.19	\$ 10,535.00	\$ 12,100.27	\$ 3,148.54		
South-Central	7	\$ 17,112.72	\$ -	\$ 4,791.56	\$ 1,711.27	\$ 10,609.89	\$ 7,058.49	\$ 3,148.54		
West Coast	4	\$ 15,877.21	\$ -	\$ 4,445.62	\$ 1,587.72	\$ 9,843.87	\$ 4,033.42	\$ 3,148.54		
									\$ -	National Dir.
State Coordinators (estimated monthly)							\$ 1,008.36		\$ -	Collegiate Dir.
									\$ -	Communications MCS
									\$ -	Technology MCS
Totals from previous Phase			\$ -	\$ 32,585.69	\$ 5,924.67	\$ 20,736.35	\$ 203.30	\$ 1,481.17	\$ -	
Current Phase increase			\$ -	\$ 592.47	\$ 5,924.67	\$ 52,729.58	\$ 805.06	\$ 1,667.37	\$ -	
Notes										
Donation amounts (column C) refer back to the 'Donation goals' tab, where populations are broken out into regions and states.										
In Phase's 1-3 the Executive budget will fund the store and other Congressional activities										
* S/R/E budget is broken into State, Regional and Executive categories.										
** There are seven regions with anywhere from 4 to 12 states divided upon population.										

0	CONFIDENTIAL										
			PHASE 5 - Budget								
			Regions may advance through their Phases independent of each other.								
	Donation	County	Foundation	Congress	* S/R/E	State	** Region	Executive			
							7	4			
% of distribution		0.30	0.150	0.075	0.475	0.783	0.07	0.14			
Total per year	\$ 3,554,803.02	\$ 1,066,440.91	\$ 533,220.45	\$ 266,610.23	\$ 1,688,531.44						
Total per month	51 \$ 296,233.59	\$ 88,870.08	\$ 44,435.04	\$ 22,217.52	\$ 140,710.95	\$ 110,110.95	\$ 10,200.00	\$ 20,400.00			
North-East	8 \$ 43,487.71	\$ 13,046.31	\$ 6,523.16	\$ 3,261.58	\$ 20,656.66	\$ 17,272.31	\$ 5,100.00				
East Coast	8 \$ 41,980.40	\$ 12,594.12	\$ 6,297.06	\$ 3,148.53	\$ 19,940.69	\$ 17,272.31	\$ 5,100.00				
South-East	6 \$ 41,919.23	\$ 12,575.77	\$ 6,287.89	\$ 3,143.94	\$ 19,911.64	\$ 12,954.23	\$ 5,100.00				
North-Central	6 \$ 43,891.57	\$ 13,167.47	\$ 6,583.74	\$ 3,291.87	\$ 20,848.50	\$ 12,954.23	\$ 5,100.00				
North-West	12 \$ 42,479.84	\$ 12,743.95	\$ 6,371.98	\$ 3,185.99	\$ 20,177.92	\$ 25,908.46	\$ 5,100.00				
South-Central	7 \$ 42,781.81	\$ 12,834.54	\$ 6,417.27	\$ 3,208.64	\$ 20,321.36	\$ 15,113.27	\$ 5,100.00				
West Coast	4 \$ 39,693.03	\$ 11,907.91	\$ 5,953.95	\$ 2,976.98	\$ 18,854.19	\$ 8,636.15	\$ 5,100.00				
								\$ 5,200.00	National Dir.		
State Coordinators (estimated monthly)								\$ 2,159.04	\$ 5,200.00	Collegiate Dir.	
								\$ 5,000.00	Communications MCS		
								\$ 5,000.00	Technology MCS		
Totals from previous Phase		\$ 59,246.72	\$ 39,497.81	\$ 19,748.91	\$ 78,995.62	\$ 1,084.25	\$ 3,385.53	\$ -			
Current Phase increase		\$ 29,623.36	\$ 4,937.23	\$ 2,468.61	\$ 61,715.33	\$ 1,074.78	\$ 1,714.47	\$ 5,200.00			
Notes											
Donation amounts (column C) refer back to the 'Donation goals' tab, where populations are broken out into regions and states.											
* S/R/E budget is broken into State, Regional and Executive categories.											
** There are seven regions with anywhere from 4 to 12 states divided upon population.											

0	CONFIDENTIAL										
			PHASE 7 - Budget								
			Regions may advance through their Phases independent of each other.								
		Donation	County	Foundation	Congress	* S/R/E	State	** Region	Executive		
								7	4		
% of distribution			0.300	0.100	0.100	0.500	0.879	0.04	0.08		
Total per year		\$ 6,635,632.31	\$ 1,990,689.69	\$ 663,563.23	\$ 663,563.23	\$ 3,317,816.15					
Total per month	51	\$ 552,969.36	\$ 165,890.81	\$ 55,296.94	\$ 55,296.94	\$ 276,484.68	\$ 243,084.68	\$ 11,200.00	\$ 22,200.00		
North-East	8	\$ 81,177.06	\$ 24,353.12	\$ 8,117.71	\$ 8,117.71	\$ 40,588.53	\$ 30,385.58	\$ 5,600.00			
East Coast	8	\$ 78,363.42	\$ 23,509.03	\$ 7,836.34	\$ 7,836.34	\$ 39,181.71	\$ 30,385.58	\$ 5,600.00			
South-East	6	\$ 78,249.24	\$ 23,474.77	\$ 7,824.92	\$ 7,824.92	\$ 39,124.62	\$ 40,514.11	\$ 5,600.00			
North-Central	6	\$ 81,930.93	\$ 24,579.28	\$ 8,193.09	\$ 8,193.09	\$ 40,965.47	\$ 40,514.11	\$ 5,600.00			
North-West	12	\$ 79,295.70	\$ 23,788.71	\$ 7,929.57	\$ 7,929.57	\$ 39,647.85	\$ 20,257.06	\$ 5,600.00			
South-Central	7	\$ 79,859.37	\$ 23,957.81	\$ 7,985.94	\$ 7,985.94	\$ 39,929.68	\$ 34,726.38	\$ 5,600.00			
West Coast	4	\$ 74,093.65	\$ 22,228.09	\$ 7,409.36	\$ 7,409.36	\$ 37,046.82	\$ 60,771.17	\$ 5,600.00			
State Coordinators (estimated monthly)							\$ 4,766.37	\$ 5,700.00	\$ 5,700.00	National Dir.	
								\$ 5,400.00	\$ 5,400.00	Collegiate Dir.	
								\$ 5,400.00	\$ 5,400.00	Communications MCS	
								\$ 5,400.00	\$ 5,400.00	Technology MCS	
Totals from previous Phase			\$ 103,681.75	\$ 62,209.05	\$ 24,883.62	\$ 223,952.59	\$ 3,759.85	\$ 5,400.00	\$ 5,500.00		
Current Phase increase			\$ 62,209.05	\$ (6,912.12)	\$ 30,413.31	\$ 52,532.09	\$ 1,006.51	\$ 200.00	\$ 200.00		
Notes											
Donation amounts (column C) refer back to the 'Donation goals' tab, where populations are broken out into regions and states.											
* S/R/E budget is broken into State, Regional and Executive categories.											
** There are seven regions with anywhere from 4 to 12 states divided upon population.											

0	CONFIDENTIAL										
			PHASE 8 - Budget								
			Regions may advance through their Phases independent of each other.								
		Donation	County	Foundation	Congress	* S/R/E	State	** Region	Executive		
								7	4		
% of distribution			0.350	0.125	0.125	0.400	0.878	0.04	0.08		
Total per year		\$ 8,531,527.26	\$ 2,986,034.54	\$ 1,066,440.91	\$ 1,066,440.91	\$ 3,412,610.90					
Total per month	51	\$ 710,960.60	\$ 248,836.21	\$ 88,870.08	\$ 88,870.08	\$ 284,384.24	\$ 249,784.24	\$ 11,600.00	\$ 23,000.00		
North-East	8	\$ 104,370.50	\$ 36,529.68	\$ 13,046.31	\$ 13,046.31	\$ 41,748.20	\$ 31,223.03	\$ 5,800.00			
East Coast	8	\$ 100,752.97	\$ 35,263.54	\$ 12,594.12	\$ 12,594.12	\$ 40,301.19	\$ 31,223.03	\$ 5,800.00			
South-East	6	\$ 100,606.16	\$ 35,212.16	\$ 12,575.77	\$ 12,575.77	\$ 40,242.46	\$ 41,630.71	\$ 5,800.00			
North-Central	6	\$ 105,339.77	\$ 36,868.92	\$ 13,167.47	\$ 13,167.47	\$ 42,135.91	\$ 41,630.71	\$ 5,800.00			
North-West	12	\$ 101,951.61	\$ 35,683.06	\$ 12,743.95	\$ 12,743.95	\$ 40,780.64	\$ 20,815.35	\$ 5,800.00			
South-Central	7	\$ 102,676.33	\$ 35,936.72	\$ 12,834.54	\$ 12,834.54	\$ 41,070.53	\$ 35,683.46	\$ 5,800.00			
West Coast	4	\$ 95,263.26	\$ 33,342.14	\$ 11,907.91	\$ 11,907.91	\$ 38,105.30	\$ 62,446.06	\$ 5,800.00			
State Coordinators (estimated monthly)							\$ 4,897.73	\$ 5,900.00	\$ 5,900.00	National Dir.	
								\$ 5,600.00	\$ 5,600.00	Collegiate Dir.	
								\$ 5,600.00	\$ 5,600.00	Communications MCS	
								\$ 5,600.00	\$ 5,600.00	Technology MCS	
Totals from previous Phase			\$ 165,890.81	\$ 55,296.94	\$ 55,296.94	\$ 276,484.68	\$ 4,766.37	\$ 5,600.00	\$ 5,700.00		
Current Phase increase			\$ 82,945.40	\$ 33,573.14	\$ 33,573.14	\$ 7,899.56	\$ 131.36	\$ 200.00	\$ 200.00		
Notes											
Donation amounts (column C) refer back to the 'Donation goals' tab, where populations are broken out into regions and states.											
* S/R/E budget is broken into State, Regional and Executive categories.											
** There are seven regions with anywhere from 4 to 12 states divided upon population.											

WE THE PEOPLE CONGRESS

2006 – Plan of Record (POR)

December 7, 2006

CONFIDENTIAL

Charter

Expose and rectify fundamental government violations of our United States Constitution, our States Constitutions, as well as our federal and states statues and regulations.

POR (Plan of Record)

- Overview & Outline

Term and Conditions

Vigilance

- Identify; verify, and track government abuses with regards to US and State constitutions and laws.
- Initiate, Maintain, and Press appropriate response to abuses
- Sponsor, Host, or otherwise provide for Annual National (3 outstanding people) & State (3 per state) Patriot awards

Objective

- Primary Objective
- Objective II
- Objective III
- Objective IV
- Objective V

Strategy

- The plans and methods for achieving our objectives

Tactics

- The actions implemented for accomplishing our strategy

Logistics

- The handling of the details of our Tactical operations
Time & Timely deployment of Money, People, Literature, and other resources

Benchmarks

- The points of reference for measuring our progress in these areas

POR
(Plan of Record)

Purpose of this P.O.R. : To articulate the current and adaptive Plan of the National Staff of the WTP Congress (1) for Approval of the Board of Directors, and (2) for operational implementation by the National Staff of the WTP Congress. The format follows the course of establishing our Objectives; defining the Strategy by which we will accomplish those Objectives; outlining the various operational Tactics we will deploy, with a focus on achieving (Strategic) success; enumerating the Logistical resources we must efficiently, effectively, and timely bring to bear to ensure the (Tactical) success of the activities, initiatives, and other efforts we put into play; and lastly the benchmarks and milestones by which the Board of Directors, the National Staff, and the members and supporters of the WTP Congress can evaluate results, measure progress, and where the Board of Directors and the National Staff can effectively determine the best course corrections.

Terms and Conditions

- National Director to sign up Regional Directors (with the approval of the Board of Directors) with regards to POR and Terms and Conditions
- Regional Directors to interview approve and sign up State Coordinators with regards to POR and Terms and Conditions

The National Director will issue guidelines regarding interview process.

- Regional Directors working in concert with State Coordinators to sign up County Coordinators with regards to POR and Terms and Conditions

Coordinator Appointments

Recommendations and appointments for all coordinators will be evaluated with the following guidelines...

coordinator

- Candidate will understand and appreciate the time commitment involved in being a

and be available on a daily basis in some limited capacity.

- Candidate will understand the issues of WTP Congress and be able to demonstrate a familiarity with WTP-Congress/Foundation objectives.

- Candidate will provide a workable, phone number and email address and return communications in a reasonable time.

- Candidate will be literate and have necessary computer skills such as Internet navigation, Excel spreadsheet, word processor.

- Candidate must understand the importance of the position of being placed in an activist role with We the People Congress and its efforts to restore our government to its Constitutional limitations.

- Candidate will disclose all affiliations they have with any government agency.

- Candidate will NOT at any time turn over, release or cause to be released any information concerning "We the People Congress" unless directly ordered by a competent judge.

- Candidate will NOT disclose any "We the People Congress or Foundation" CONFIDENTIAL material unless directly ordered by a competent judge.

All Congressional positions will be Independent Contractors (IC).

- The National Director will serve as an IC with the recommendation of the BOD without regard to any fixed time.

- The Regional Directors will serve as an IC with a recommendation of the National Director and with the approval of the Board of Directors without regard to any fixed time.

- State Coordinators will serve as an IC with the recommendation of their Regional Director without regard to any fixed time.

- County Coordinators will serve as an IC with the recommendation of their State Coordinator without regard to any fixed time.

- ALL Congressional Independent Contractors agree to...

- 1) Accept Electronic Liberty Dollars (ELD) as outlined in "WTP Congress donation model 2005 – Version 10"

- 2) Provide an accurate email address to receive ELD's.

- 3) Receive ELD's in a timely manner.

Congressional Image

- As a representative of We the People Congress ALL Coordinators and Directors will conduct themselves in respectful and cordial manner, wearing appropriate attire as befits the occasion.

VIGILANCE

Identify, verify, and track government abuse with regards to the U.S. and State Constitutions, statues and regulations. Technology MCS will build a template where information can be submitted by any WTP Congressional member on the WeThePeopleCongress.com website. This information will be kept in a database and a unique tracking number assigned where it can be verified and monitored.

Although it is understood that Vigilance is a key component of our Congressional Charter it has been identified as a major resource drain; first to properly implement the following on our web-site, and secondly to verify and monitor each violation. It may be more appropriate in our longer range plan; however The National Director and the Technology MCS intend to begin working on pieces of this as soon as resources are available.

- **Identify:** Information to be gathered...

WTP Congress Member:

Date:

Description of abuse:

In violation of...

State Law:

U.S. Law:

State Constitution:

U.S. Constitution:

Prayer for relief:

Responsible Official:

RO – position:

RO – phone number:

RO – address:

RO – email address:

- **Verify:** Develop a process where reported abuse can be verified.
- **Track:** When and what actions have been taken.

Objectives

Primary Objective: To enforce the People's 1st Amendment Right to Petition the Government for a Redress of their Grievances by demanding documented and specific responses to our Petitions; and demanding effective, Constitutional actions to Redress (rectify and correct) these Grievances; and to provide the American People organized and effective methods and means to Petition for and Obtain Redress.

Secondary Objectives: To Educate and Communicate to the American People the unconstitutional behavior of our Government with regards to...

II – Constitutional Taxation

III – The Federal Reserve Act

IV – War Powers Clauses

V – The US Patriot Act

...and to provide the American People with organized and effective methods and means to Petition for and obtain Redress.

Strategy

Primary Objective: Generate sufficient publicly, nation-wide awareness, effective civil disobedience, and respectful non-compliance with regards to the Peoples demand for documented and specific answers concerning the Peoples 1st Amendment right to petition the government for a redress of grievances.

Secondary Objectives:

II – Constitutional Taxation: Generate sufficient publicly, nation-wide awareness, effective civil disobedience, and respectful non-compliance to the current unlawful enforcement and unconstitutional application of taxation in a way that ensures its replacement will be within the bounds of our Constitution.

III – The Federal Reserve Act: Align, ally, or partner with other organizations, and utilize the above strategy and the below Tactics to effect Redress and government's return to compliance with the Constitution

IV – War Powers Clauses: Align, ally, or partner with other organizations, and utilize the above strategy and the below Tactics to effect Redress and government's return to compliance with the Constitution

V – The U.S. Patriot Act: Align, ally, or partner with other organizations, and utilize the above strategy and the below Tactics to effect Redress and government's return to compliance with the Constitution

Tactics

Grass Roots Activism and Outreach concerning ...

- Petition for Redress of Grievances
- Lawsuit in support of the Right to Petition
- Truth in taxation hearings
- Operation Stop Withholding
- “No Answers – No Taxes” modified to “No Redress – No Taxes”
- Judicial Awareness (“Show me the tapes”, J.A.I.L, FIJA/AJI, and Judicial Watch)
- Proactive Public Training (general public, or core crews of “pit-bull guerrilla fighters”)
- Constitutional Education and Training (SAPF)

Logistics

Grass Roots Activism and Outreach through Education and Communication:

- After receiving the master lists from WTP ~Regional Directors will compile and update by phone or email a complete list of all current state and county coordinators and their relevant contact information and update WeThePeopleCongress.com.
- Regional Directors will determine their current level of interest and activity and communicate that a new “plan for national awareness, organization and action” has been developed and is being put in place and will be available for their review and participation.
- Regional Directors will initiate a weekly dialogue with active, interested and committed coordinators via email as to the details of the outreach plan and their role in bringing it about in their respective areas.
- Regional Directors will train State Coordinators who will then train and/or assist Regional Directors with the training of all County Coordinators with regards to...

- WTP Congress Meeting Materials

The Meeting Materials will be the responsibility of the National Director and WTP Congress Communications MCS working in concert with WTP Foundation and Regional Directors. Materials will be provided to keep the people of the United States informed of their rights and their patriotic duty to protect and defend the Constitution from all enemies foreign and domestic.

- Field Activities

These activities relate to the subject of mass-awareness and local activism and the programs will focus on what activities work best for the region with the least amount of cost. Programs should be developed by State Coordinators in conjunction with the Regional Directors taking into account the geographic area and their unique requirements for delivery of our message to the public such as...

- 800 Number
- Cards
- Fliers, Buttons
- Yard Signs
- Magnetic Car Signs
- Newspaper Ads
- Radio and TV spots
- Billboards
- Word of Mouth
- Monthly (or as-needed meetings) for education and organizing activism

- Follow-Up

County Coordinators will communicate with those patriots who attend WTP Congressional meetings. Regional Directors working with the State Coordinators will follow up if no County Coordinator exists. The success or failure of the organization could well depend on this one activity.

- Donation objectives

Regional Directors will disclose and emphasize all the economic benefits (dedicated percentage of membership & dues sent to CC's for expenses, outreach, activism, and compensation for their time) to the coordinators as a result of their participation in the building of local awareness & membership.

- Monthly meetings

County Coordinators, prior to the holding of public meetings, must have their respective local areas "developed" with dissemination of our public message, and they must be trained in how and what to present to meeting attendees for maximum effectiveness and continued attendee presence. A "developed" area would be demonstrated by the evidence showing numerous activities that have been carried out in the field on a continual basis; including those items described in FIELD ACTIVITIES. County Coordinators must have at least 5 dedicated people before monthly meetings begin. Monthly meetings must include new people. Without new blood, the momentum stagnates. Always conclude monthly meetings by sharing county and state donation goals and allowing the attendees the opportunity to donate. Coordinators must know how to set-up, conduct, keep control, and stay focused with regards to these meetings.

- Booth Activities

Bring mass awareness to local events by organizing and staffing booths; Providing WTP Congress Materials and information concerning local meetings, dates, and times.

- Regional Directors will schedule and organize RTP Lawsuit Awareness Tour within their respective regions.
- Establish WTP Congressional groups in ALL United States Colleges, Community Colleges, and Universities

Benchmarks:

In order that objectives (strategy, tactics, logistics) can be accurately measured and evaluated it is **critical** that each Regional Director be updated on a bi-weekly basis with two **very important** criteria...

- The first is Membership status. Details, such as date of membership, State, County and City **must** be reported in a timely manner.
- The second is Donation status. Donation amounts broken into categories of Region, State and County **must** also be reported in a timely manner.

Without this feedback Regional Directors will be flying blind, which is unacceptable. The reporting of these two **very important** criteria cannot be stressed enough. Responsibility for the timely and accurate reporting to the Regional Directors will fall to the National Director and Technology MCS.

WTP Congress General Provisions

- Mission Statement

- WTP Congress is an independent organization of sovereign Americans determined to hold all public servants accountable to the Federal and State Constitutions, as well as Federal and State statues and regulations. WTP Congress exists to help guard the sovereignty of the People against government wrongdoing by petitioning; by monitoring, influencing, and promoting legislation; by actively lobbying legislatures; and by working for legislative reforms and greater citizen-voter taxpayer participation in their government.

- Oath

- *I do solemnly swear (or affirm) that I will support and defend the Constitution of the United States against all enemies, foreign and domestic; and that I will bear true faith and allegiance to the same.(that I will not sacrifice the rights of any individual or minority for the benefit of the greater number; that I will not use coercion for any purpose except to protect human life, liberty, or property; I will not endorse any law that does not apply to all citizens equally.)(So help me God.)*

- WTP Congress organization/structure

- A National Director will be nominated by the Chairman of the Board and approved by the Board of Directors for We the People Congress Inc. The National Director will chair the FUNDRAISING COMMITTEE and the PROGRAM COMMITTEE as outlined in the AMENDED BY-LAWS WE THE PEOPLE CONGRESS INC. dated December, 15, 2001.
- The National Director, with the approval of the Board of Directors, will appoint and supervise WTP Congress Executive staff, which will consist of Regional Directors, Collegiate Director, Communication MCS, and Technology MCS.
(MCS - Member of Congressional Staff)
- Regions of the United States will be divided upon population and described in WTP Congressional Donation Model. One Regional Director will be appointed for each region and will supervise the several State Coordinators within that region. Regional Directors will have full authority to remove, replace and to appoint County and State Coordinators within their regions. Regional Directors will have the authority to modify or delete County or State Coordinators web content within their regions. Regional Directors will be responsible for WTP Congressional objectives as set forth in WTP Congressional POR.
- The Collegiate Director will be responsible for collegiate objectives as set forth in WTP Congressional POR.
- Communications MCS will be responsible for a monthly newsletter as well as WTP Congressional Communications objectives as set forth in WTP Congressional POR.
- Technology MCS will be responsible for developing and maintaining WeThePeopleCongress.com web site as well as WTP Congressional Technology objectives as set forth in WTP Congressional POR.

- **Remuneration**

- The National Director, the Executive Staff, as well as all State and County Coordinators will function as Independent Contractors with regards to remuneration from We the People Congress Inc. and as outlined in WTP Congress Donation Model 2005.
- WTP Congressional Donation Model 2005. (See attached spreadsheet)
 - Donation Phase goals are based on total revenue flows from Congress Memberships, one-time and subscription donations, WTP Congress store products, etc.
- Membership dues will increase ASAP, tentatively targeted at \$50 for individuals and \$75 for Couples. Proportional adjustments will also be made for lifetime Memberships, etc.
- Remuneration for all Coordinators will be based on the POR **incentive based**, phased revenue sharing model. Regions may progress through phases at different rates of progress, with the appropriate remuneration parameters applied accordingly.

As significant growth and stability in revenue occurs, proportionately greater levels of remuneration will flow, in increasing amounts (by phase), to lower level Coordinators, including County Coordinators. Substantial numbers of effective full-time, compensated Coordinator positions are anticipated to be funded by the POR model.

Additional payment incentives may be added (or modified as conditions change), including incentive mechanisms so that non-Coordinator individuals may also directly benefit from their personal contributions in making the Congress succeed.

- The Terms and Conditions of Coordinator remuneration are subject to change at any time at the sole discretion of WTPC senior management and/or Board of Directors.
- Electronic Liberty Dollars (ELD)
 - All remuneration will be distributed in ELD through email, requiring the Executive Staff, State, and County Coordinators to register and have access to an email account.
 - A timely audit of monthly donations, advertisement, WTP Congressional store dollars and membership dues will begin on the first business day following the last day of the preceding month and be completed no later than 5 business days. Remuneration to the Executive Staff, State, and County Coordinators will be made as soon as the month's audit is complete, and no later than the 11th day of the month.

- **One and Five year plan submitted to the Board of Directors for approval.**
 - The first week of November, the Executive Staff will begin work on the following year's one year plan. The plan will be completed before years end and will be presented to the Board of Directors for approval.
 - Upon approval of one year plan (POR) the Executive Staff will begin work on the five year plan. Five year plan will be completed by the end of the first calendar quarter and shortly afterwards presented to the Board of Directors for approval. Concurrently, while developing the same the Executive Staff will begin operational work on the approved POR.